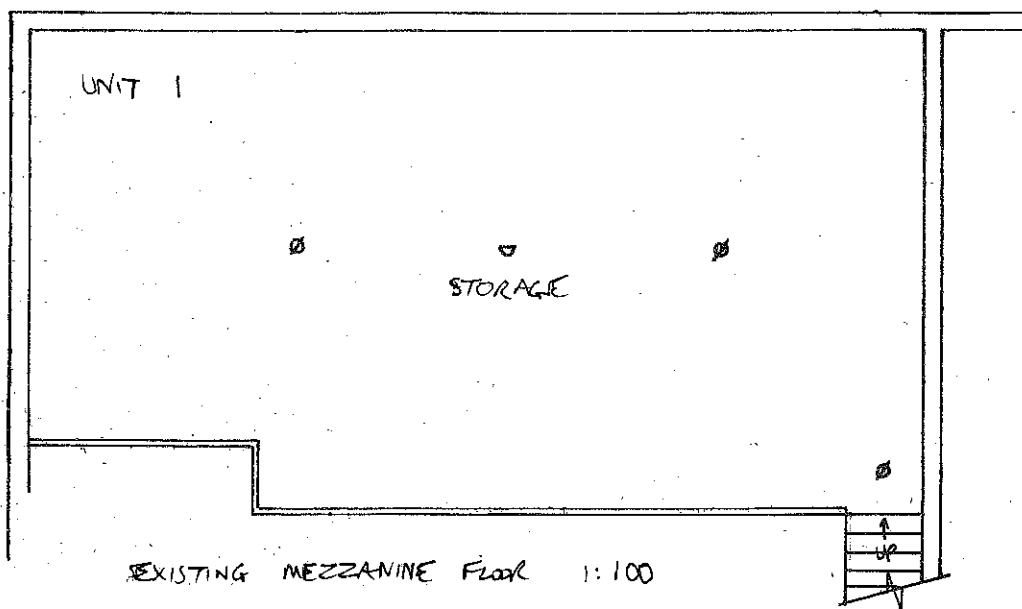


EXISTING GROUND FLOOR 1:100



EXISTING MEZZANINE Floor 1:100

- ⊕ EMERGENCY LIGHT
- ▽ SMOKE DETECTOR
- BREAK GLASS ALARM
- ⊕ FLASHING/AUDIBLE ALARM INDICATOR
- Ⓟ POWDER FIRE EXTINGUISHER
- Ⓢ WATER EXTINGUISHER
- Ⓜ EXIT SIGN
- Ⓜ FIRE ALARM CONTROL PANEL

PBTO 'PUSH BAR TO OPEN' SIGN

**PROPOSED CHANGE OF USE, ETC. TO UNITS 1 - 3 BLADEN ST., JARROW
FOR MR. TURBRIT**

DRG NO 0776/6954/646